



OFFICE OF THE ASSISTANT SECRETARY OF DEFENSE
4000 DEFENSE PENTAGON
WASHINGTON, D.C. 20301-4000

MANPOWER AND
RESERVE AFFAIRS

AUG 28 2015

MEMORANDUM FOR ASSISTANT SECRETARY OF DEFENSE (PUBLIC AFFAIRS)
DEPUTY ASSISTANT SECRETARY OF THE ARMY
(CIVILIAN PERSONNEL AND QUALITY OF LIFE)
DEPUTY ASSISTANT SECRETARY OF THE NAVY
(MILITARY MANPOWER AND PERSONNEL)
DEPUTY ASSISTANT SECRETARY OF THE AIR FORCE
(RESERVE AFFAIRS AND AIRMAN READINESS)

SUBJECT: Department of Defense (DoD) Family Advocacy Program Fiscal Year 2014 Data

The Department is committed to preventing domestic abuse and child abuse and neglect within the military community. These readiness issues obligate us to take appropriate action if the safety of someone is at risk.

Attached for your information is the Department of Defense (DoD) Family Advocacy Program (FAP) domestic abuse and child abuse and neglect data for Fiscal Year (FY) 2014. This package is forwarded annually to demonstrate how the DoD FAP tracks aggregate domestic and child abuse data and to assist in responding to related internal and external queries.

In FY14, 16,109 incidents met the DoD criteria for domestic and child abuse, an increase of 189 incidents from FY13. This number reflects a 498 incident decrease in domestic abuse and a 687 incident increase in child abuse. The rate of met criteria incidents per 1,000 children has increased steadily over the past several years and child neglect accounts for the majority of these incidents. In FY14, incidents involving child neglect rose by 14% from FY13.

While the DoD rates of child victims are about half of their counterpart rates in the U.S. civilian population as compiled by the U.S. Department of Health and Human Services, this emerging trend in child abuse and neglect requires our focused attention. My office is launching a first-ever DoD digital strategy to reach, inform, and engage military families where they live and thrive online, with available resources to protect and strengthen families. Secondly, through the Integrated Project Team for Child Abuse and Neglect and Domestic Abuse, all components of the coordinated community response are working to reduce incidents across DoD. Collectively, we must intensify our efforts to embed prevention at all levels. With your continued support, we will fortify the safety and well-being of our military families.

Rosemary F. Williams
Deputy Assistant Secretary of Defense
(Military Community and Family Policy)

Attachments:
As stated

**Department of Defense Family Advocacy Program
Child Abuse/Neglect and Domestic Abuse Data Trends from FY03 to FY14**

Spouse Abuse Reported to the Family Advocacy Program (FAP):

| <u>Year</u> | <i>Couples</i> | <i>Total</i> | | <i>Met Criteria</i> | |
|-------------|-------------------|----------------|------------------|---------------------|------------------|
| | <u>Population</u> | <u>Reports</u> | <u>Rate/1000</u> | <u>Reports</u> | <u>Rate/1000</u> |
| FY 03 | 694,527 | 17,072 | 24.6 | 9,845 | 14.2 |
| FY 04 | 698,160 | 16,392 | 23.5 | 9,434 | 13.5 |
| FY 05 | 702,727 | 15,894 | 22.6 | 8,306 | 11.8 |
| FY 06 | 707,895 | 15,399 | 21.7 | 7,586 | 10.7 |
| FY 07 | 708,178 | 15,260 | 21.5 | 7,257 | 10.2 |
| FY 08 | 718,526 | 15,939 | 22.2 | 6,767 | 9.4 |
| FY 09 | 738,067 | 18,208 | 24.7 | 7,476 | 10.1 |
| FY 10 | 751,758 | 18,785 | 25.0 | 8,411 | 11.2 |
| FY 11 | 753,110 | 19,277 | 25.6 | 8,386 | 11.1 |
| FY 12 | 734,308 | 18,671 | 25.4 | 8,345 | 11.4 |
| FY 13 | 713,135 | 17,295 | 24.3 | 7,935 | 11.1 |
| FY 14 | 690,460 | 16,287 | 23.6 | 7,464 | 10.8 |

Intimate Partner Abuse Reported to the FAP:

| <u>Year</u> | <i>Unmarried</i> | <i>Met Criteria</i> | <i>Met Criteria</i> |
|-------------|-------------------|---------------------|---------------------|
| | <u>Population</u> | <u>Reports</u> | <u>Rate/1000</u> |
| FY 06 | 617,848 | 340 | 0.5 |
| FY 07 | 611,316 | 602 | 1.0 |
| FY 08 | 622,858 | 619 | 0.9 |
| FY 09 | 620,542 | 747 | 1.2 |
| FY 10 | 618,549 | 721 | 1.2 |
| FY 11 | 612,358 | 867 | 1.4 |
| FY 12 | 609,723 | 909 | 1.5 |
| FY 13 | 613,589 | 996 | 1.6 |
| FY14 | 593,072 | 969 | 1.6 |

Child Abuse Reported to the FAP:

| <u>Year</u> | <i>Child</i> | <i>Total</i> | | <i>Met Criteria</i> | |
|-------------|-------------------|----------------|------------------|---------------------|------------------|
| | <u>Population</u> | <u>Reports</u> | <u>Rate/1000</u> | <u>Reports</u> | <u>Rate/1000</u> |
| FY 03 | 1,149,764 | 16,354 | 14.2 | 7,463 | 6.5 |
| FY 04 | 1,120,590 | 16,704 | 14.9 | 7,881 | 7.0 |
| FY 05 | 1,104,716 | 13,852 | 12.5 | 6,178 | 5.6 |
| FY 06 | 1,103,362 | 12,612 | 11.4 | 5,603 | 5.1 |
| FY 07 | 1,103,270 | 13,788 | 12.5 | 5,434 | 4.9 |
| FY 08 | 1,122,098 | 12,661 | 11.3 | 5,406 | 4.8 |
| FY 09 | 1,147,318 | 12,845 | 11.2 | 5,499 | 4.8 |
| FY 10 | 1,166,079 | 14,986 | 12.9 | 6,633 | 5.7 |
| FY 11 | 1,165,812 | 15,081 | 12.9 | 6,819 | 5.8 |

| | | | | | |
|-------|-----------|--------|------|-------|-----|
| FY 12 | 1,140,024 | 15,656 | 13.7 | 7,003 | 6.1 |
| FY 13 | 1,099,702 | 15,346 | 14.0 | 6,989 | 6.4 |
| FY 14 | 1,050,889 | 16,526 | 15.7 | 7,676 | 7.3 |

- FY03 through FY14 data on spouse abuse includes only those incidents involving married individuals. Either the victim or the abuser may have been an active duty Service member or the civilian spouse of an active duty Service member. In FY06 and onward, an additional category, “intimate partner,” was added to capture incidents involving a person (1) with whom the victim shares a child in common, or (2) is a current or former partner with whom the victim shares or has shared a common domicile. In such cases, the victim or the abuser may have been an active duty Service member or a civilian.
- Reports represent the number of incidents of alleged abuse; therefore, one or more reports may be submitted on a single victim. This allows for the identification of families in which repeated acts of family violence have occurred.
- The data only reflects child abuse/neglect and domestic abuse reported to the DoD FAP. It is not an estimate of the total amount of child abuse and domestic abuse that occurred in military families.
- The data includes physical abuse (including acts resulting in no injuries), sexual abuse, emotional abuse (including emotional abuse without any acts of physical or sexual abuse), and child neglect.
- In reports that met the DoD criteria for abuse, the abuser may have been an active duty Service member, a civilian family member, or (in child abuse/neglect incidents) a caregiver outside the family. However, in 97 percent of the met criteria child abuse/neglect incidents, the abuser was a parent or other family member.
- This data should not be compared to data from other studies unless:
 - Differences in military and civilian contexts have been addressed;
 - The studies’ design and methodologies were similar (e.g., reports to authorities should not be compared to estimates from surveys of the population);
 - The data elements were similar; and,
 - The demographics from the studies are standardized to the military population, which is much younger and more male than the general civilian population.
- The DoD rates of child victims are about half of their counterpart rates in the U.S. civilian population as compiled by the U.S. Department of Health and Human Services.

FREQUENTLY ASKED QUESTIONS
ABOUT THE FAMILY ADVOCACY PROGRAM
FY14 DOMESTIC ABUSE and CHILD ABUSE and NEGLECT DATA

Q: What does the Family Advocacy Program FY14 domestic abuse and child abuse and neglect data tell us about family violence in the military community?

A: The Department of Defense keeps track of how many incidents of child abuse and neglect are reported to the Family Advocacy Program.

FY14 data shows a decline from FY13 data in both the number of reports of suspected domestic abuse and the number of those reports that met the DoD criteria for domestic abuse. The rate per thousand couples of met criteria incidents of domestic abuse has remained relatively stable for the last five years.

The number of reports of suspected child abuse and neglect and the number of those reports that met the DoD criteria for child abuse and neglect have risen steadily over the past five years. Child neglect represents the largest percentage of child abuse. The rate per thousand children of met criteria incidents that involved child neglect was 14% higher in FY14 than in FY13.

Q: How does DoD define child neglect?

A: Child neglect is defined as the negligent treatment of a child through acts or omissions by an individual responsible for the child's welfare under circumstances indicating the child's welfare is harmed or threatened. Neglect includes abandonment, deprivation of necessities, exposure to physical hazards, educational neglect, lack of supervision, medical neglect, and/or non-organic failure to thrive.

The two most prevalent forms of child neglect in military families are lack of supervision that is appropriate to the age and functioning of the child and exposure to physical hazards such as bathtubs, electrical outlets and unsafe cribs.

Q. The number of met criteria incidents of child abuse and neglect reported to the FAP is steadily increasing from FY09. What does this change mean?

A. We continue to monitor this data closely. There are several possible explanations for these increases. First, they may reflect the cumulative effects of the high rates of deployment on the military family's ability to sustain coping strategies during the last decade of war and the current stressors related to reintegration and concerns about potential involuntary separation.

Q: How does the DoD child abuse and neglect data compare to civilian studies?

A: DoD rates of child abuse and neglect are approximately half of their counterpart rates in the U.S. civilian population, as compiled by the U.S. Department of Health and Human Services. This may be explained in part by the strong support military families receive and the success of prevention efforts sponsored by the FAP and other military family support programs.

Q: How does the DoD plan to address this increase in child abuse and neglect?

A: This emerging trend in child abuse and neglect requires our focused attention. We have engaged the Military Service Family Advocacy Programs to leverage every available resource at the local, installation, regional, and Service headquarters level to reach families who may be at risk. My office is launching a first-ever DoD digital strategy to reach, inform, and engage military families where they live and thrive online, with available resources to protect and strengthen families. Secondly, through the Integrated Project Team for Child Abuse and Neglect and Domestic Abuse, all members of the coordinated community response are working to reduce incidents across DoD.

PREPARED BY: Mary E. Campise, Office of Family Readiness Policy, 571-372-5346



DEPARTMENT OF DEFENSE

FAMILY ADVOCACY PROGRAM CHILD ABUSE/NEGLECT (CAN) DATA FY14 Report



CAN* Incidents FY03-14



| Year | Child Population | Total | | Met Criteria | |
|-------------|------------------|---------------|-------------|--------------|------------|
| | | Reports** | Rate/1000 | Reports** | Rate/1000 |
| FY03 | 1,149,764 | 16,354 | 14.2 | 7,463 | 6.5 |
| FY04 | 1,120,590 | 16,704 | 14.9 | 7,881 | 7.0 |
| FY05 | 1,104,716 | 13,852 | 12.5 | 6,178 | 5.6 |
| FY06 | 1,103,362 | 12,612 | 11.4 | 5,603 | 5.1 |
| FY07 | 1,103,270 | 13,788 | 12.5 | 5,434 | 4.9 |
| FY08 | 1,122,098 | 12,661 | 11.3 | 5,406 | 4.8 |
| FY09 | 1,147,318 | 12,845 | 11.2 | 5,499 | 4.8 |
| FY10 | 1,166,079 | 14,986 | 12.9 | 6,633 | 5.7 |
| FY11 | 1,165,812 | 15,081 | 12.9 | 6,819 | 5.8 |
| FY12 | 1,140,024 | 15,656 | 13.7 | 7,003 | 6.1 |
| FY13 | 1,099,702 | 15,346 | 14.0 | 6,989 | 6.4 |
| FY14 | 1,050,889 | 16,526 | 15.7 | 7,676 | 7.3 |

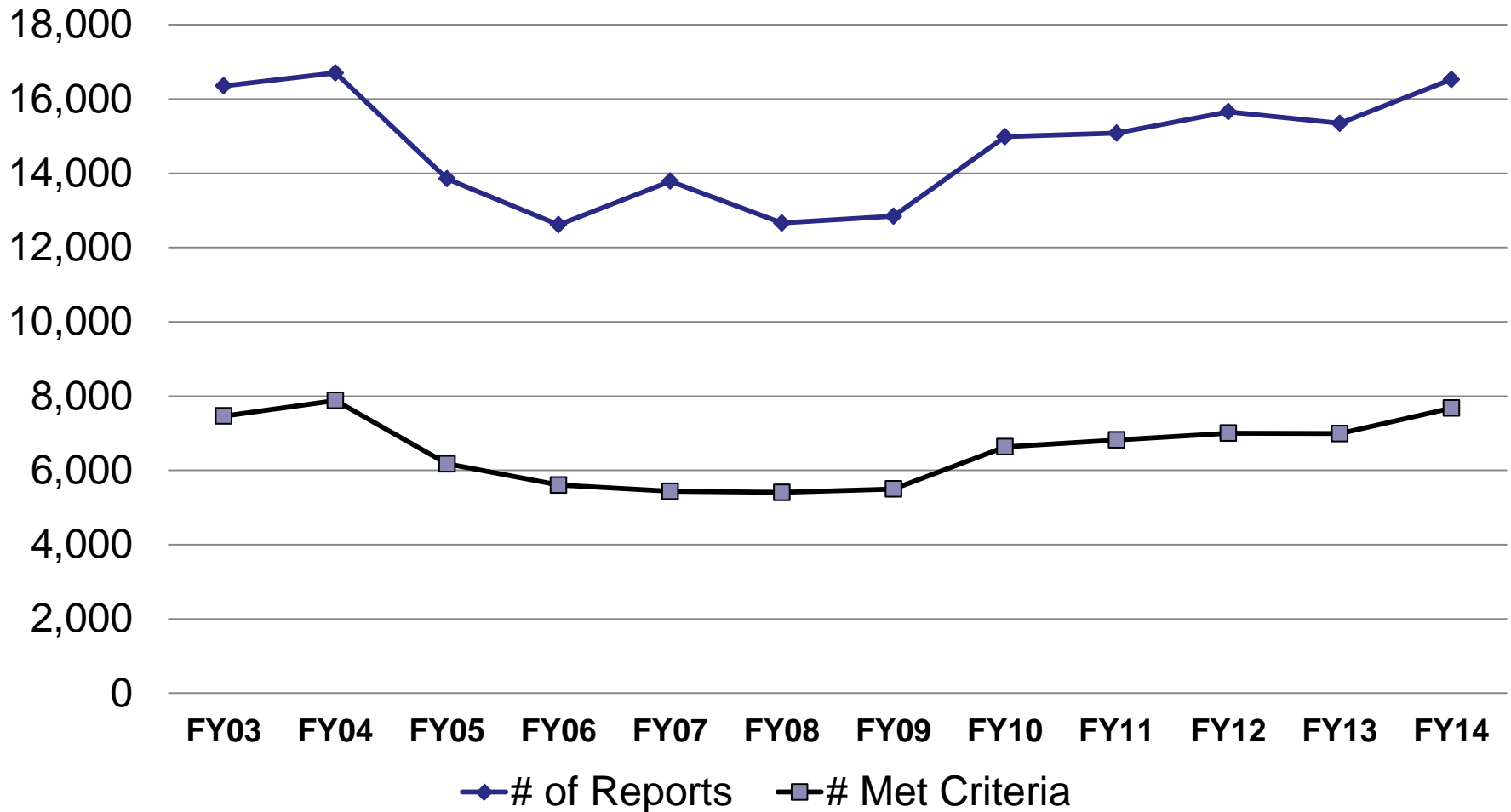
*Abuse includes acts of physical violence, and/or sexual violence, and/or emotional abuse, and/or neglect. For more specific breakdown, refer to slide 8

** Reports represent # incidents of abuse; one or more reports may be submitted on a single victim.



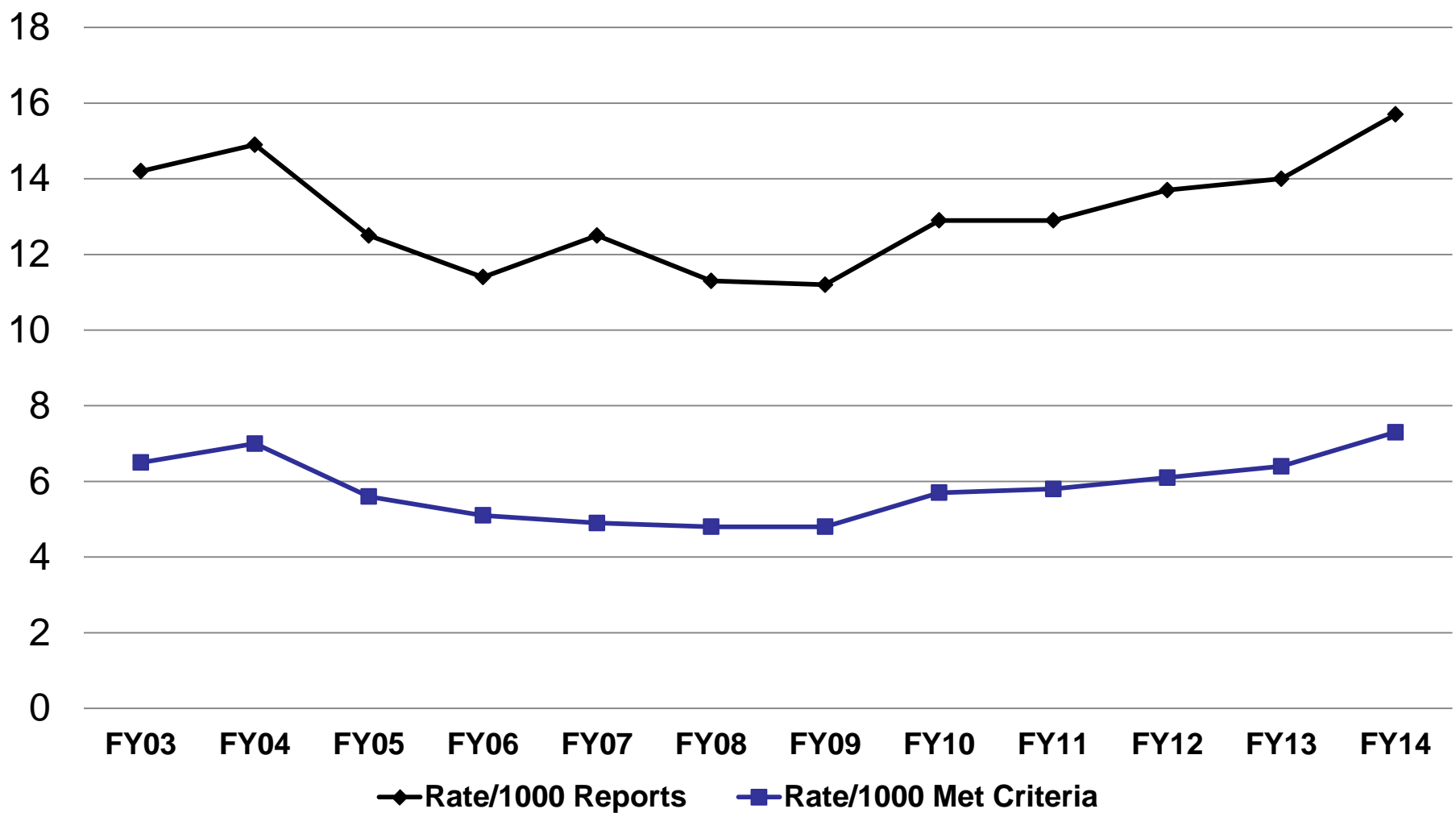
CAN

Number of Reports vs Met Criteria





CAN Rate/1000 Reports vs Met Criteria



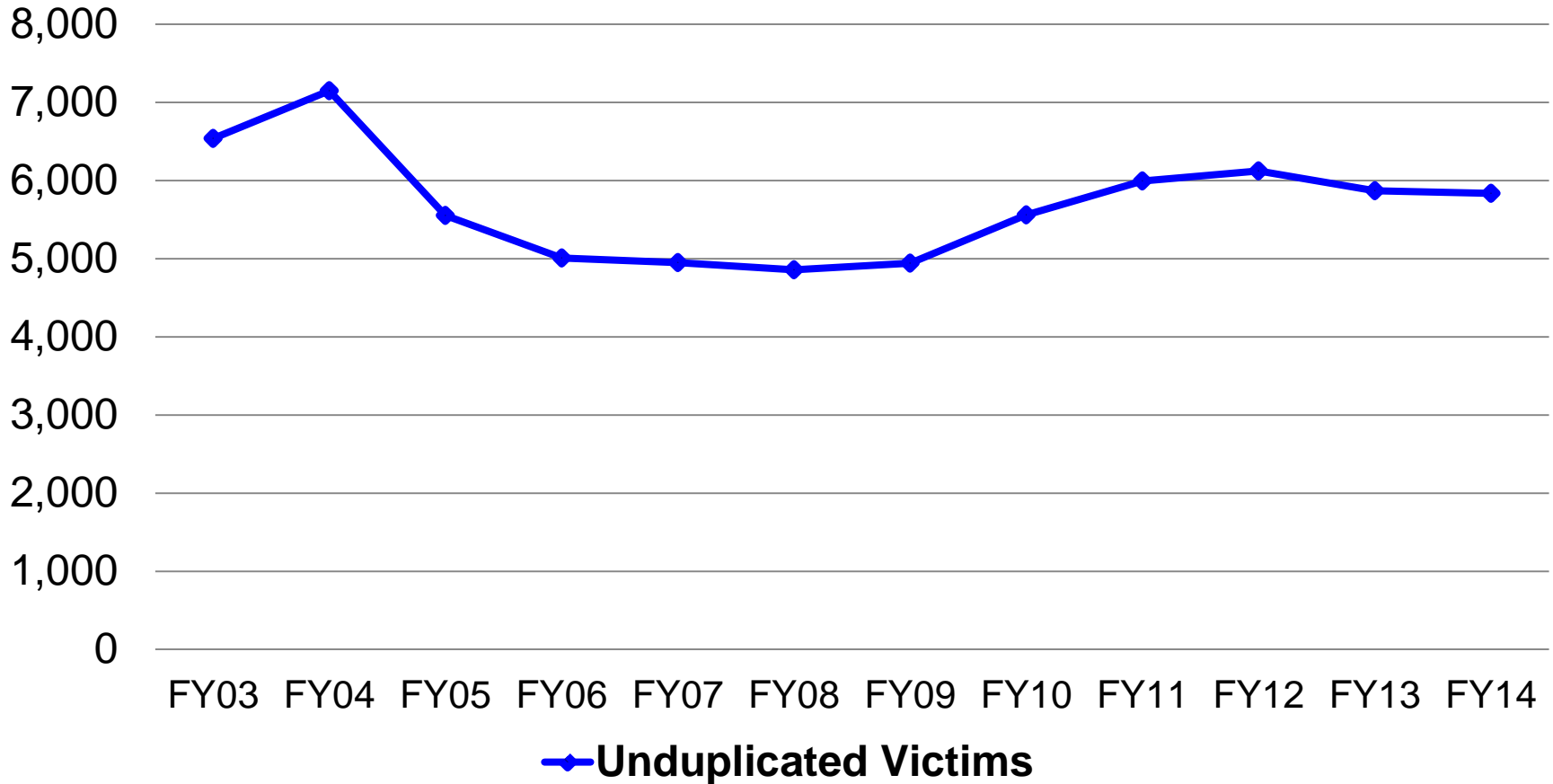


FY03-14 CAN Victims

| | Met Criteria Incidents | Victims | Children | Rate Per 1000 Children | Victims Per 1000 Children |
|-------------|------------------------|--------------|------------------|------------------------|---------------------------|
| FY03 | 7,463 | 6,538 | 1,149,764 | 6.5 | 5.7 |
| FY04 | 7,881 | 7,152 | 1,120,590 | 7.0 | 6.4 |
| FY05 | 6,178 | 5,555 | 1,104,716 | 5.6 | 5.0 |
| FY06 | 5,603 | 5,009 | 1,103,362 | 5.1 | 4.5 |
| FY07 | 5,434 | 4,951 | 1,103,270 | 4.9 | 4.5 |
| FY08 | 5,406 | 4,857 | 1,122,098 | 4.8 | 4.3 |
| FY09 | 5,499 | 4,944 | 1,147,318 | 4.8 | 4.3 |
| FY10 | 6,633 | 5,560 | 1,166,079 | 5.7 | 4.8 |
| FY11 | 6,819 | 5,994 | 1,165,812 | 5.8 | 5.1 |
| FY12 | 7,003 | 6,123 | 1,140,024 | 6.1 | 5.4 |
| FY13 | 6,989 | 5,871 | 1,099,702 | 6.4 | 5.3 |
| FY14 | 7,676 | 5,838 | 1,050,889 | 7.3 | 5.6 |



Number of Individual Child Victims in Met Criteria CAN Incidents





CAN Fatalities Reported to FAP

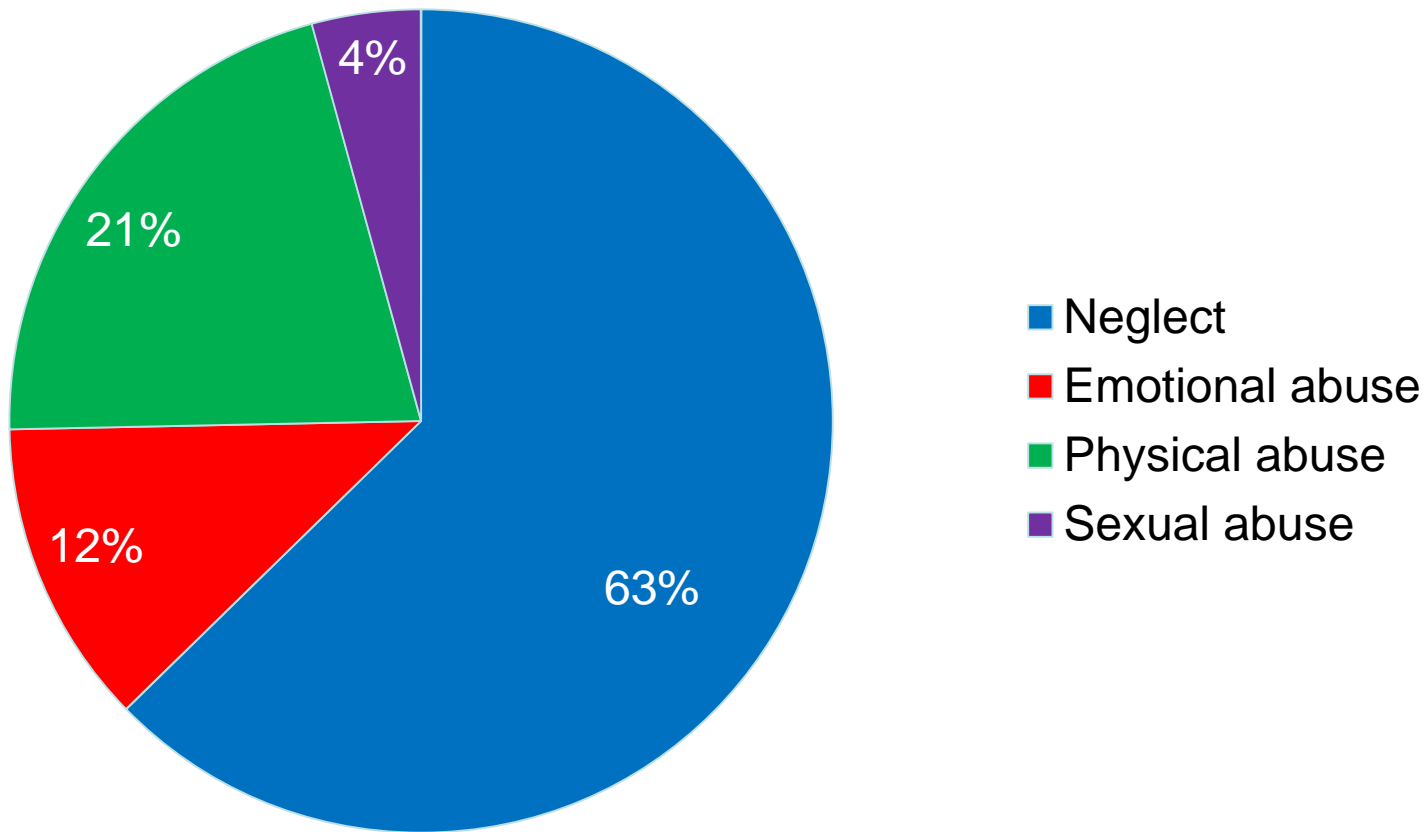
- 30 Fatalities
 - 2 Child victims previously reported to FAP
 - 5 Alleged abusers previously reported to FAP
 - 18 Fatalities were less than one year old
- Sex & status of alleged abusers
 - Male 21
 - Female 14
 - Active Duty 20
 - Civilian 15
- Age of Victims
 - Age range Birth -13 yrs
 - Mean age 1 yr
 - Median age <1 yr

FY14 FAP Data

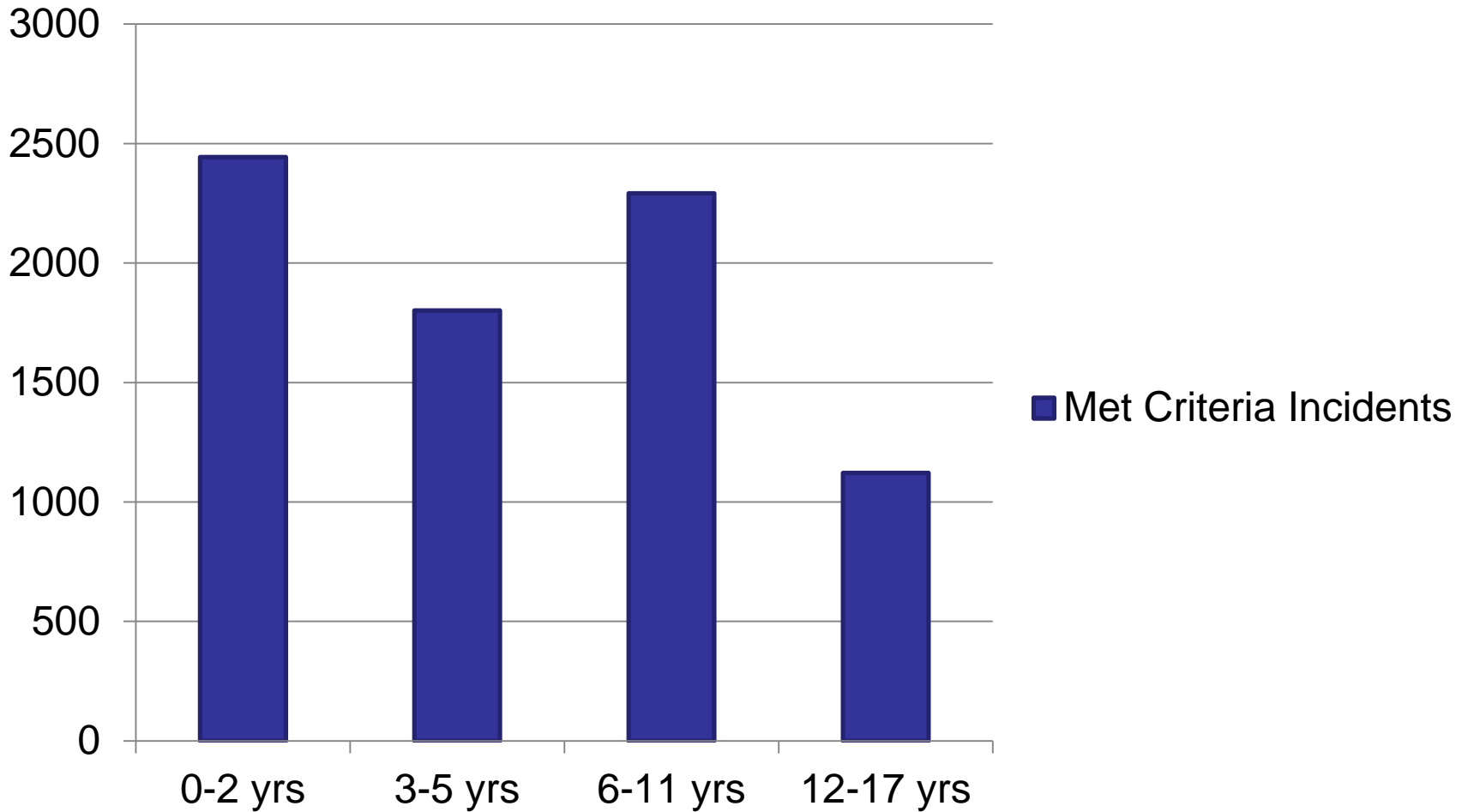
(Fatality reviews to be conducted in FY16)



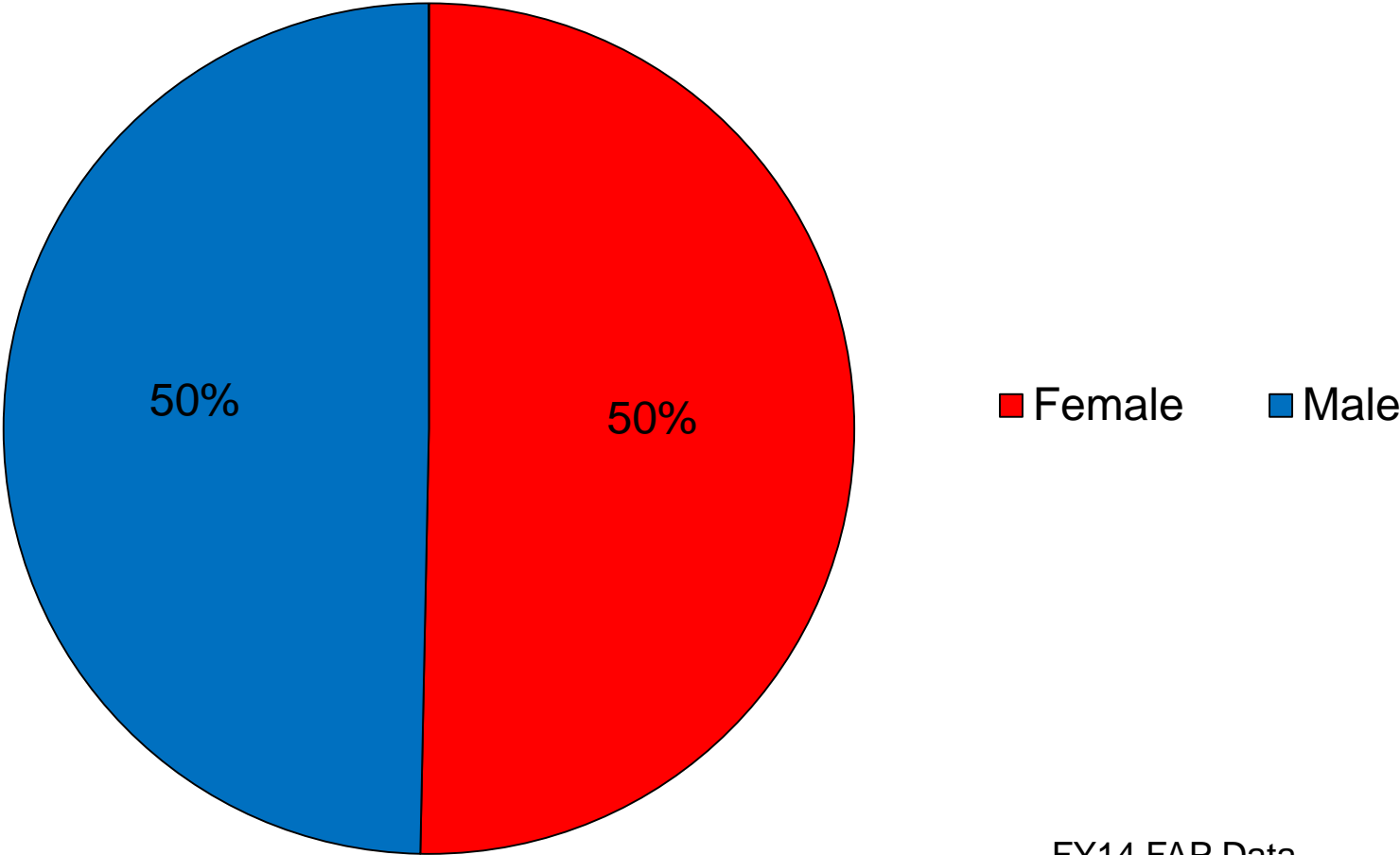
Type of CAN in Met Criteria Incidents



Met Criteria CAN Incidents by Age of Victim

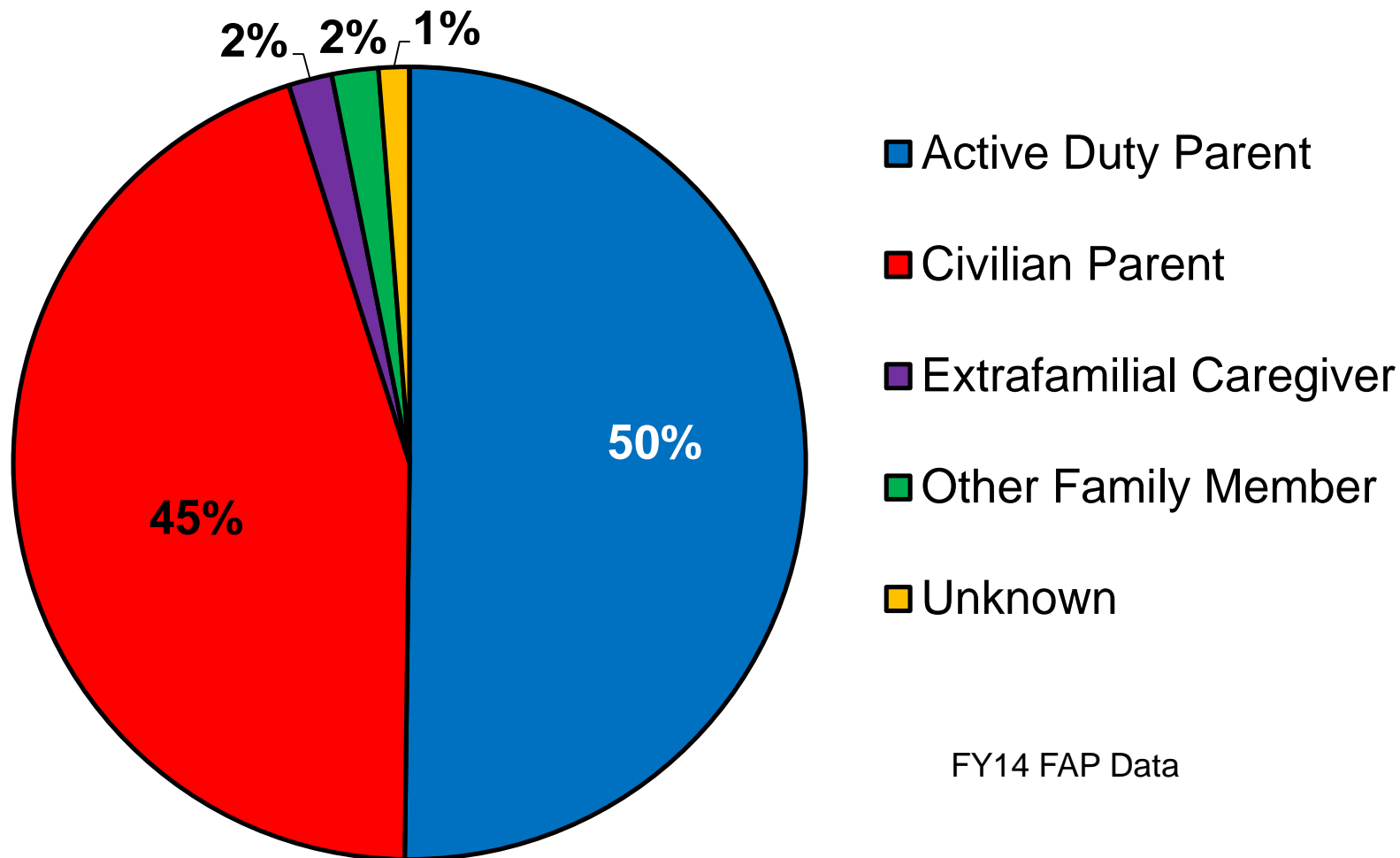


Sex of CAN Victim in Met Criteria Incidents



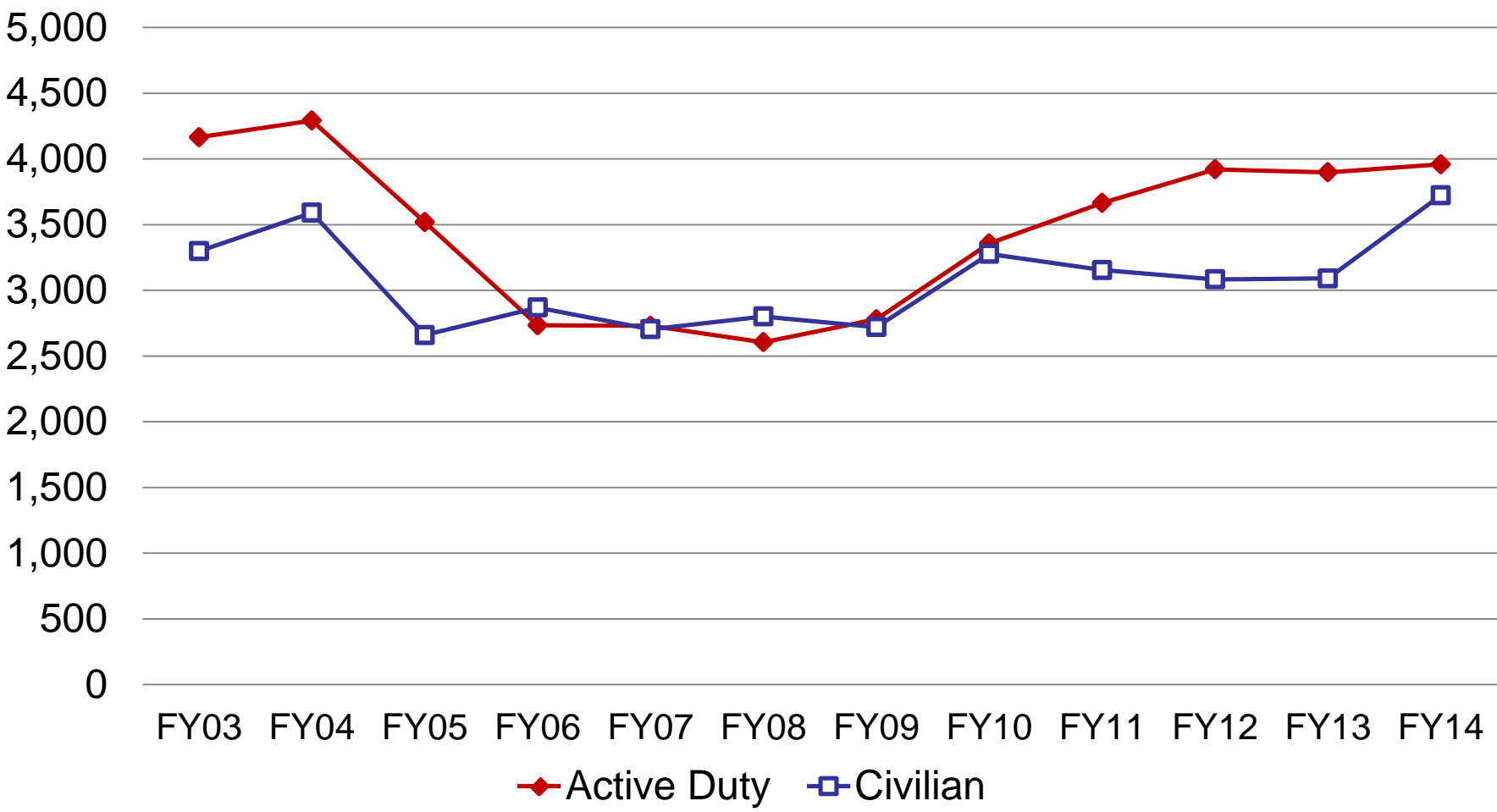
FY14 FAP Data

Status of Alleged Child Abuser in Met Criteria CAN Incidents



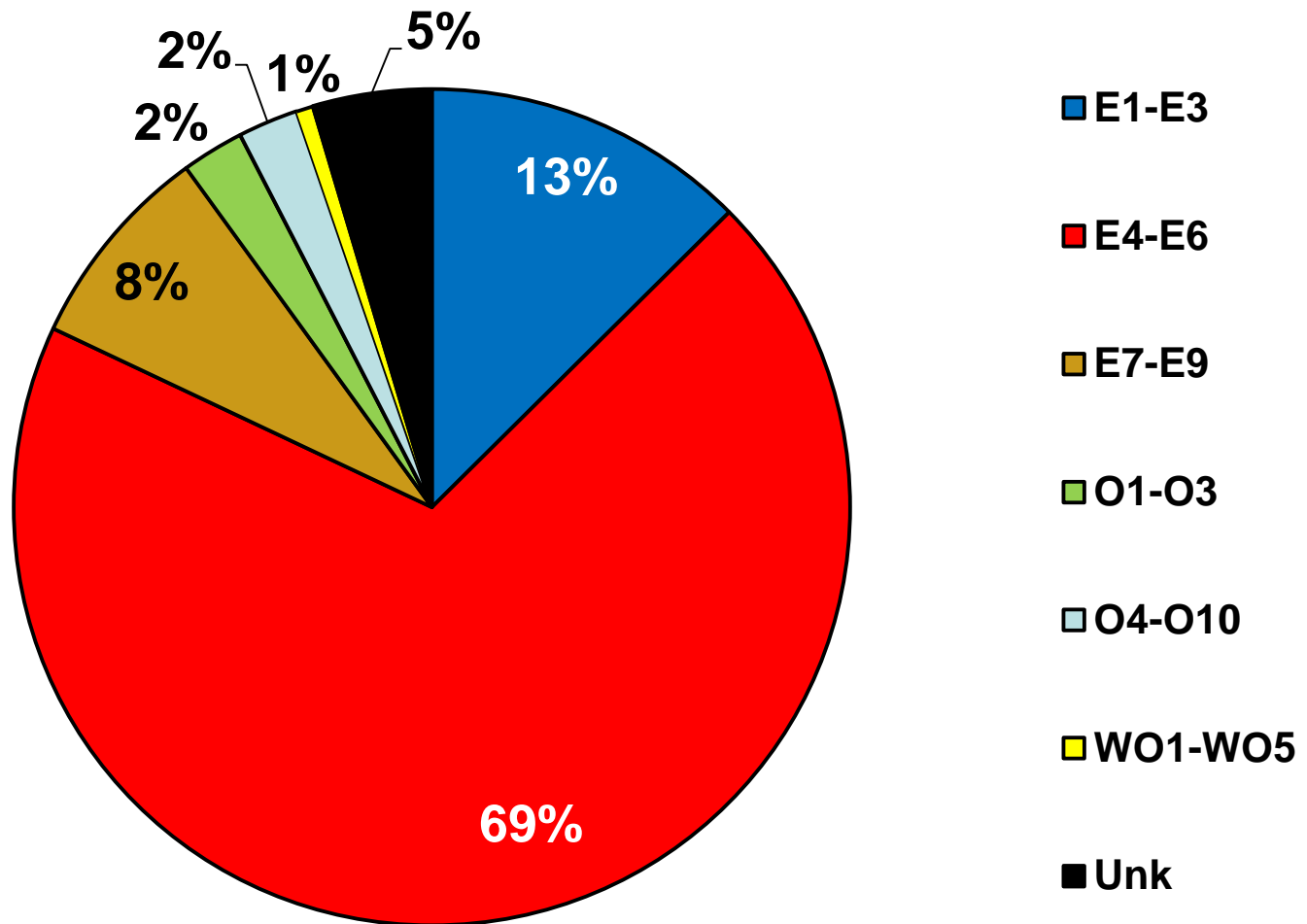
FY14 FAP Data

Status of Alleged Abuser in Met Criteria CAN Incidents



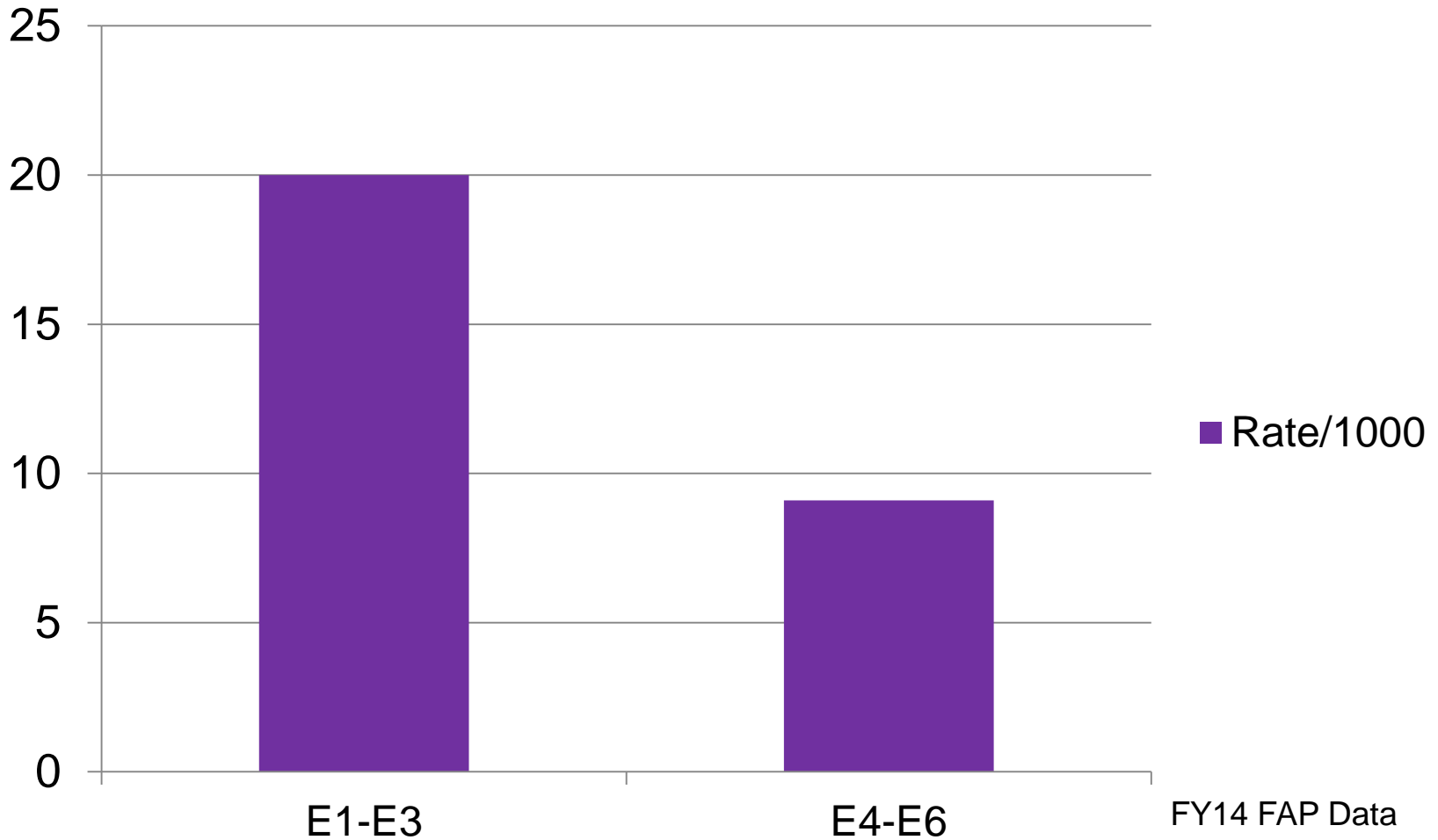
FY14 FAP Data

Met Criteria CAN Incidents by Alleged Abuser Pay Grade





Rate/1000 of Alleged CAN Abusers in Pay Grades with Highest Numbers

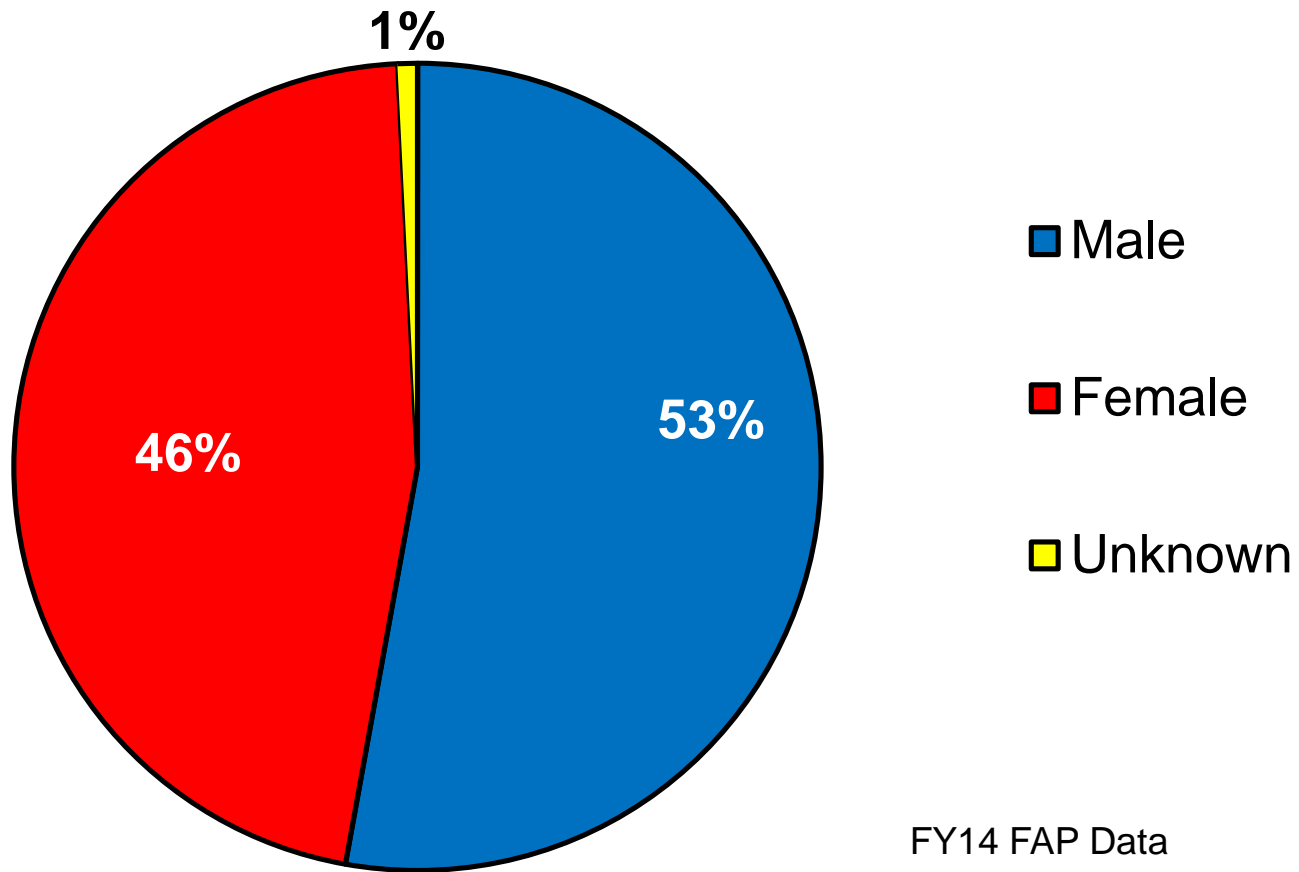




Sex of Alleged Child Abuser in Met Criteria CAN Incidents

| Year | Male | Female | Unknown | Total |
|-------------|--------------|--------------|-----------|--------------|
| FY03 | 4,112 | 3,130 | 221 | 7,463 |
| FY04 | 4,220 | 3,423 | 238 | 7,881 |
| FY05 | 3,418 | 2,611 | 149 | 6,178 |
| FY06 | 2,910 | 2,573 | 120 | 5,603 |
| FY07 | 2,850 | 2,520 | 64 | 5,434 |
| FY08 | 2,753 | 2,585 | 68 | 5,406 |
| FY09 | 2,907 | 2,499 | 93 | 5,499 |
| FY10 | 3,458 | 3,038 | 137 | 6,633 |
| FY11 | 3,671 | 3,062 | 86 | 6,819 |
| FY12 | 3,955 | 2,934 | 114 | 7,003 |
| FY13 | 3,989 | 2,944 | 56 | 6,989 |
| FY14 | 4,058 | 3,557 | 61 | 7,676 |

Sex of Alleged Child Abuser in Met Criteria CAN Incidents



FY14 FAP Data



DEPARTMENT OF DEFENSE

FAMILY ADVOCACY PROGRAM

DOMESTIC ABUSE (DA) DATA

FY14 Report



FY03-14 Spouse Abuse*



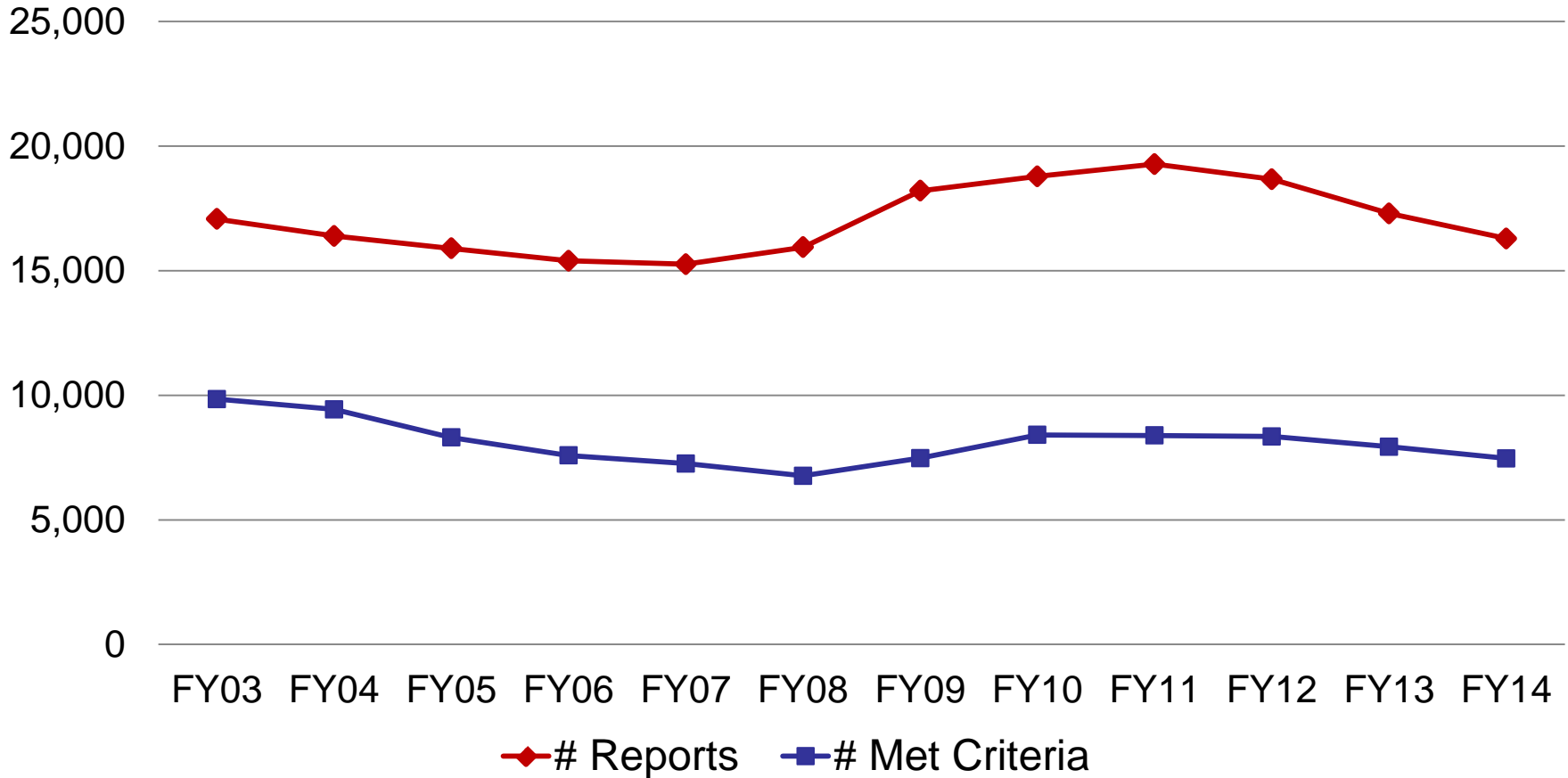
| Year | Couples Population | Total | | Met Criteria | |
|-------------|--------------------|---------------|-------------|--------------|-------------|
| | | Reports** | Rate/1000 | Reports** | Rate/1000 |
| FY03 | 694,527 | 17,072 | 24.6 | 9,845 | 14.2 |
| FY04 | 698,160 | 16,392 | 23.5 | 9,434 | 13.5 |
| FY05 | 702,727 | 15,894 | 22.6 | 8,306 | 11.8 |
| FY06 | 707,895 | 15,399 | 21.7 | 7,586 | 10.7 |
| FY07 | 708,178 | 15,260 | 21.5 | 7,257 | 10.2 |
| FY08 | 718,526 | 15,939 | 22.2 | 6,767 | 9.4 |
| FY09 | 738,067 | 18,208 | 24.7 | 7,476 | 10.1 |
| FY10 | 751,758 | 18,785 | 25.0 | 8,411 | 11.2 |
| FY11 | 753,110 | 19,277 | 25.6 | 8,386 | 11.1 |
| FY12 | 734,308 | 18,671 | 25.4 | 8,345 | 11.4 |
| FY13 | 713,135 | 17,295 | 24.3 | 7,935 | 11.1 |
| FY14 | 690,460 | 16,287 | 23.6 | 7,464 | 10.8 |

*Abuse includes acts of physical violence, and/or sexual violence, and/or emotional abuse, and/or neglect

**Reports represent # incidents of abuse; one or more reports may be submitted on a single victim.



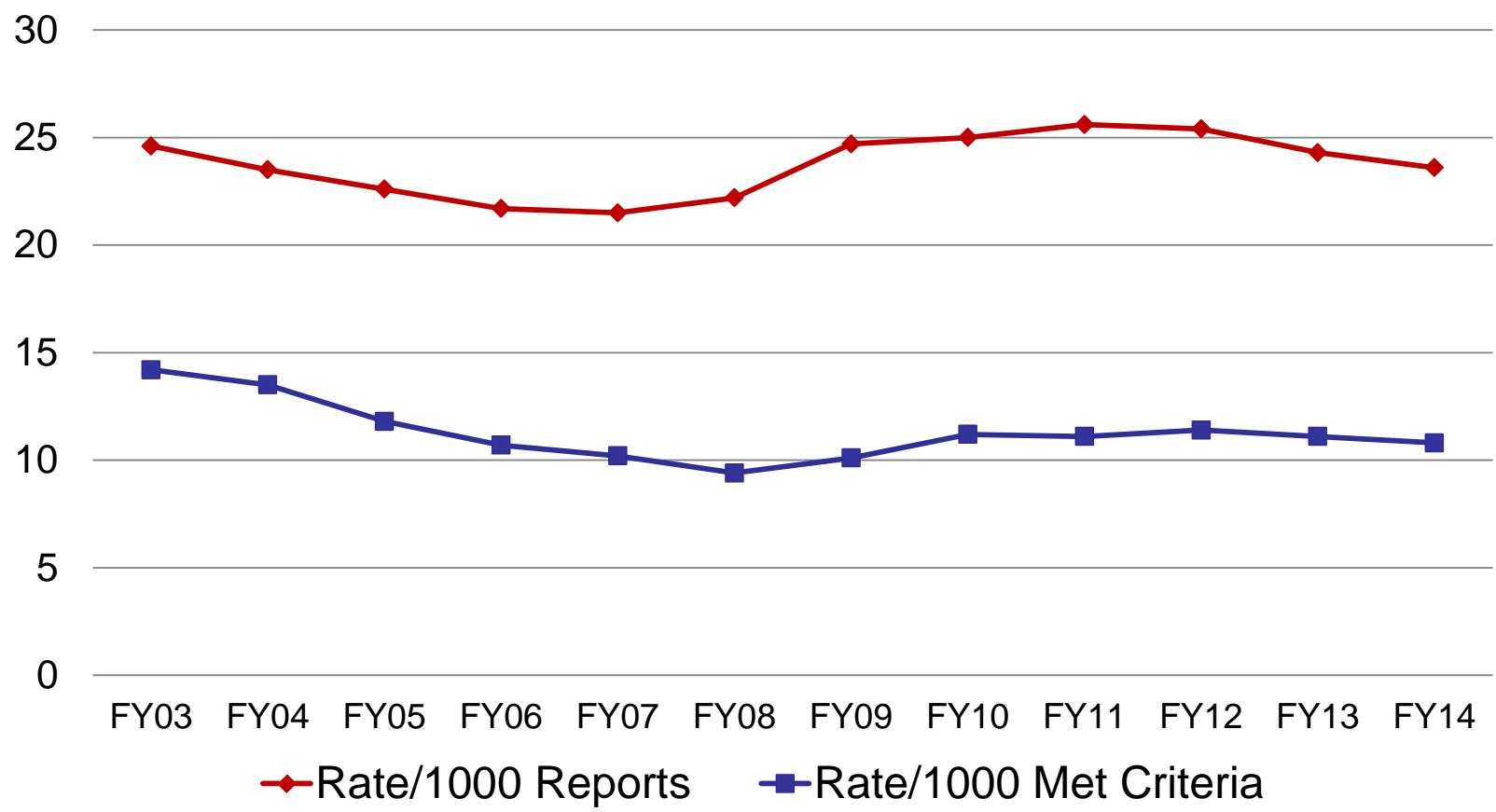
Spouse Abuse Number of Reports vs Met Criteria



FY14 FAP Data



Spouse Abuse Rate/1000 Reports vs Met Criteria



FY14 FAP Data



Former Spouse/Intimate Partner Abuse

| Year | Unmarried Population | Met Criteria Reports | Met Criteria Rate/1,000 |
|------|----------------------|----------------------|-------------------------|
| FY06 | 617,848 | 304 | 0.5 |
| FY07 | 611,316 | 602 | 1.0 |
| FY08 | 622,858 | 619 | 0.9 |
| FY09 | 620,542 | 747 | 1.2 |
| FY10 | 618,549 | 721 | 1.2 |
| FY11 | 612,358 | 867 | 1.4 |
| FY12 | 609,723 | 909 | 1.5 |
| FY13 | 613,589 | 996 | 1.6 |
| FY14 | 593,072 | 969 | 1.6 |

-In FY 06 an additional category was added to capture met criteria incidents involving a (1) former spouse, a person (2) with whom the victim shares a child in common or (3) who is a current or former intimate partner with whom the victim shares or has shared a common domicile.

-Unmarried population drawn from DMDC Active Duty Family - Marital Status Report - Sep 14-Single with and without children

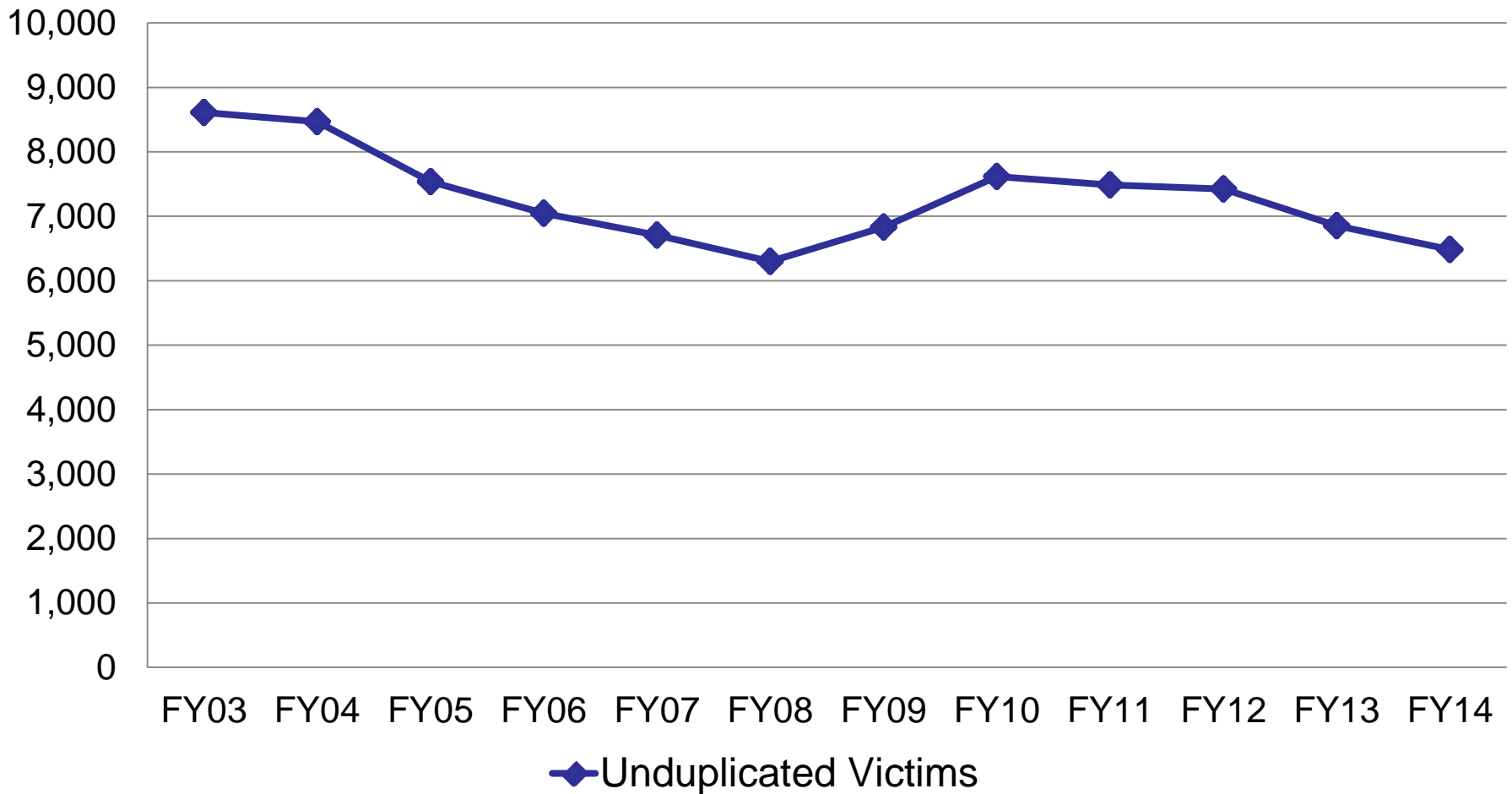
FY14 FAP Data



Met Criteria Spouse Abuse Reports FY03-14

| Year | Incidents | Victims | Couples | Incidents/1000 Couples | Victims/1000 Couples |
|-------------|--------------|--------------|----------------|------------------------|----------------------|
| FY03 | 9,845 | 8,610 | 694,527 | 14.2 | 12.3 |
| FY04 | 9,434 | 8,467 | 698,160 | 13.5 | 12.1 |
| FY05 | 8,306 | 7,538 | 702,727 | 11.8 | 10.7 |
| FY06 | 7,586 | 7,047 | 707,895 | 10.7 | 9.9 |
| FY07 | 7,257 | 6,707 | 708,178 | 10.2 | 9.5 |
| FY08 | 6,767 | 6,299 | 718,526 | 9.4 | 8.7 |
| FY09 | 7,467 | 6,834 | 738,067 | 10.1 | 9.3 |
| FY10 | 8,411 | 7,618 | 751,758 | 11.2 | 10.1 |
| FY11 | 8,386 | 7,485 | 753,110 | 11.1 | 9.9 |
| FY12 | 8,345 | 7,422 | 734,308 | 11.4 | 10.1 |
| FY13 | 7,935 | 6,854 | 713,135 | 11.1 | 9.6 |
| FY14 | 7,464 | 6,483 | 690,460 | 10.8 | 9.4 |

Number of Individual Spouse Abuse Victims



FY14 FAP Data

Domestic Abuse Fatalities Reported to FAP



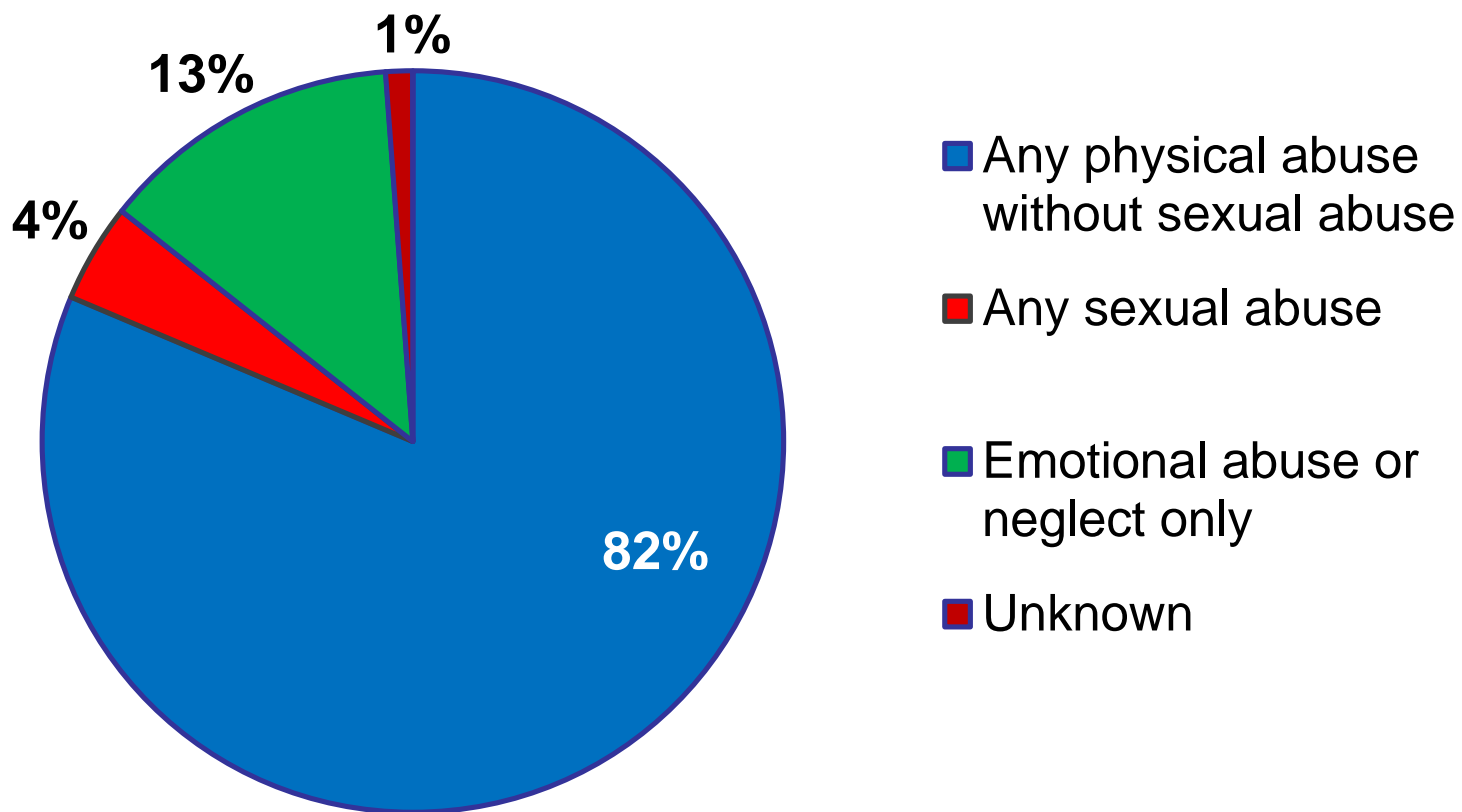
- 11 Fatalities
 - 1 Victims previously reported to FAP
 - 2 Alleged abusers previously reported to FAP
- Sex & status of alleged abusers
 - Male 9
 - Active Duty 9

(Fatality reviews to be conducted in FY 16)

FY14 FAP Data



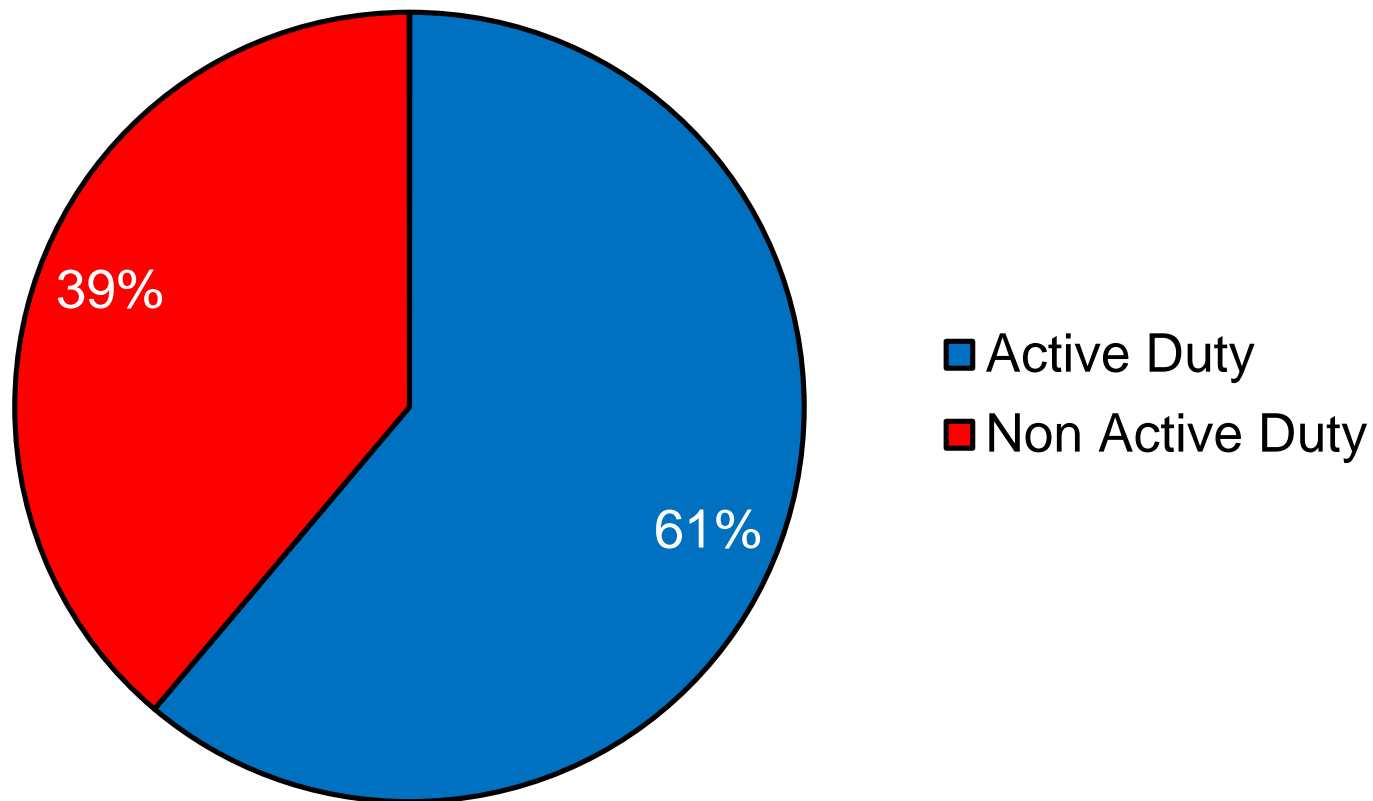
Type of Spouse Abuse in Met Criteria Incidents



FY14 FAP Data



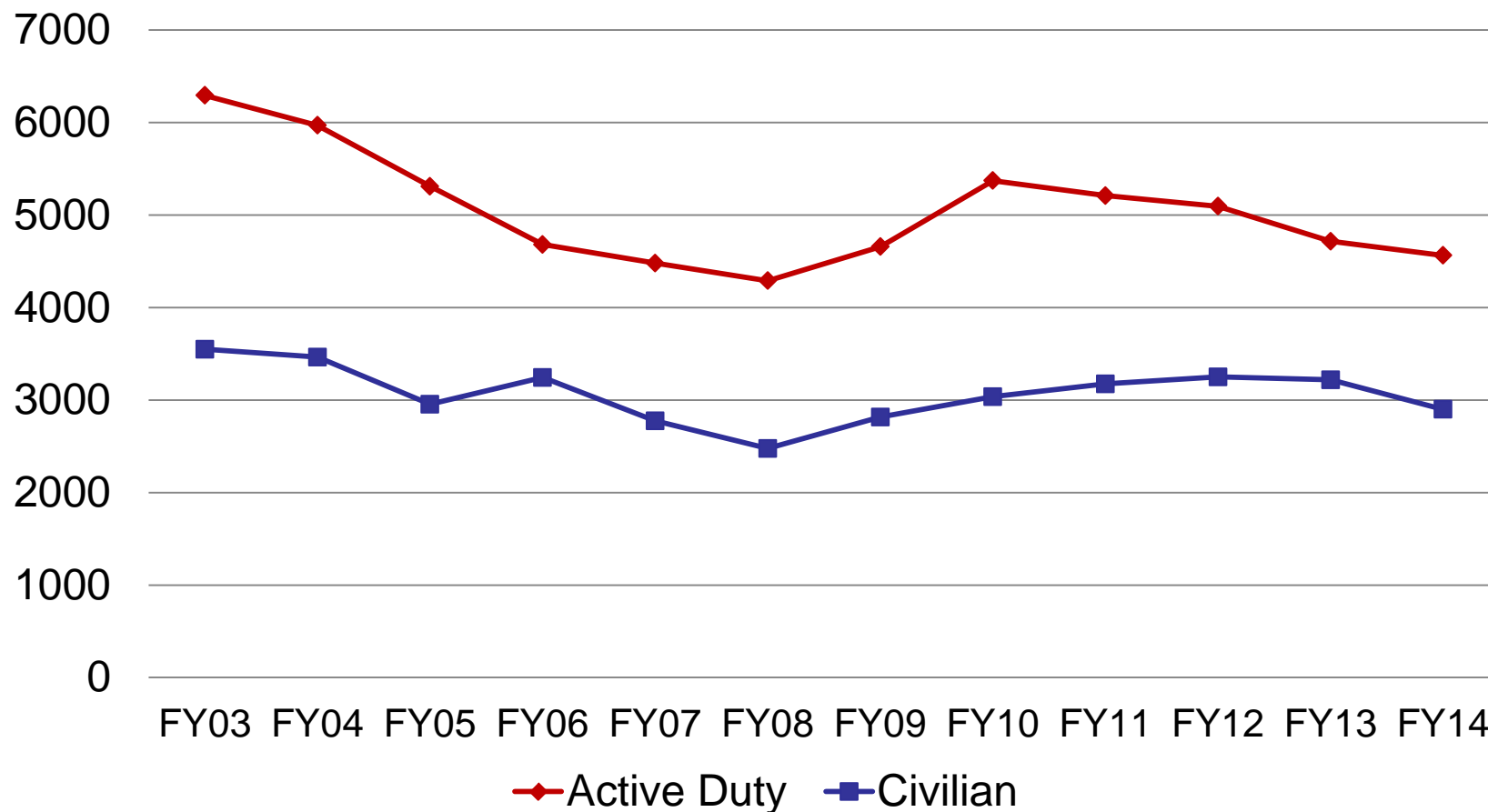
Status of Alleged Spouse Abuser in Met Criteria Incidents



FY14 FAP Data



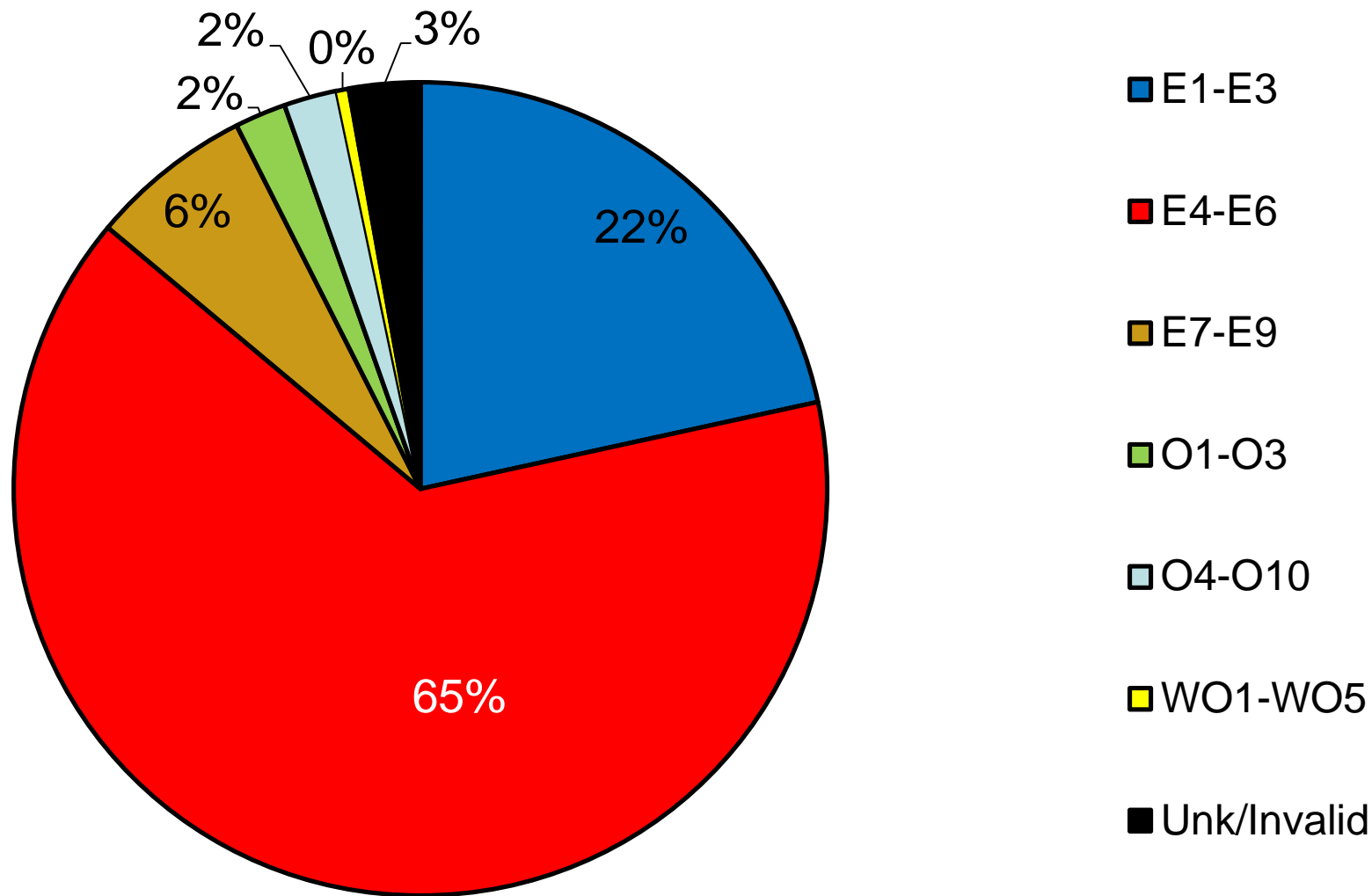
Status of Alleged Spouse Abuser in Met Criteria Incidents



FY14 FAP Data



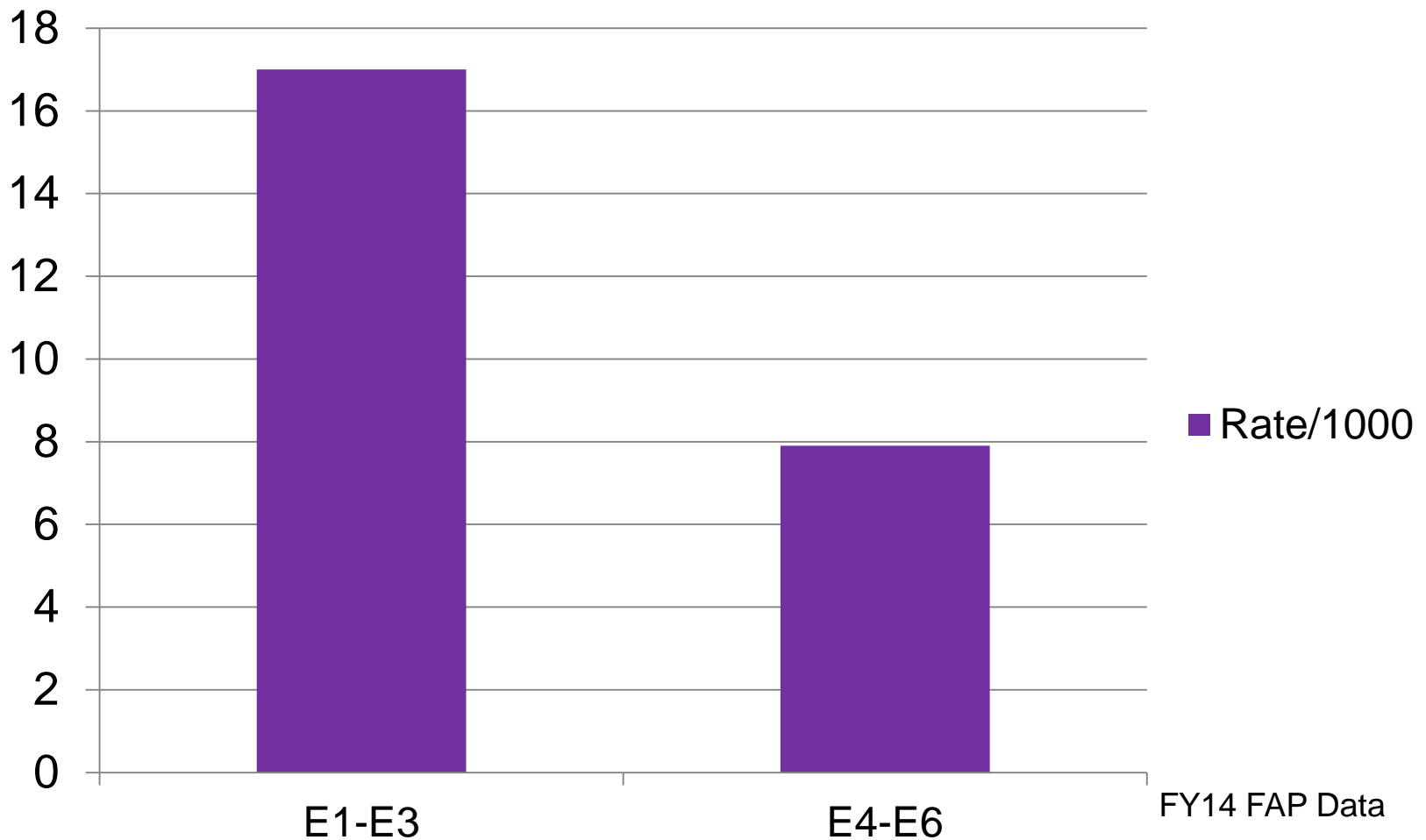
Met Criteria Spouse Abuse Incidents by Alleged Offender Pay Grade



FY14 FAP Data



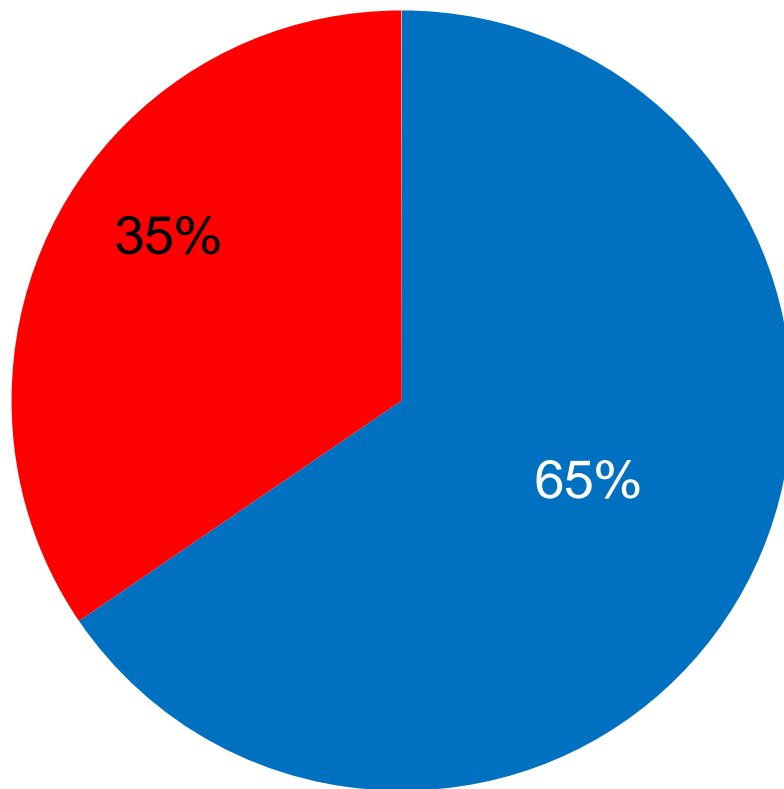
Rate/1000 of Alleged Spouse Abusers in Pay Grades with Highest Numbers





Sex of Alleged Spouse Abuse Offender in Met Criteria Incidents

■ Male ■ Female



FY14 FAP Data

Family Advocacy Program Fiscal Year 2014 Spouse and Child Abuse Data Key Findings

Spouse Abuse

- The number of reports of suspected spouse abuse to the Family Advocacy Program (FAP) decreased 5.8 percent from FY13 and decreased 4.6 percent from FY03.
- The rate of reported spouse abuse per 1,000 couples decreased 2.9 percent from FY13 and decreased 4.1 percent from FY03 rates.
- The number of spouse abuse reports that met the DoD criteria for abuse and entry into the FAP Central Registry fell 5.9 percent from FY13 and have declined 24 percent since FY03. The rate of incidents that met criteria per 1,000 couples decreased 2.7 from FY13 rates and is 24 percent below FY03 rates.
- Eleven domestic abuse fatalities were reported to the FAP in FY14, of which one victim and two alleged abusers were previously known to the FAP. In the domestic abuse fatality reports, 9 of the alleged abusers were male and 9 were active duty.
- In FY14, alleged abusers who were on active duty in incidents that met criteria for abuse represented 61 percent of all alleged abusers.
- Of the active duty alleged abusers in incidents that met criteria where the rank is known, 65 percent are in pay grades E4 - E6. These pay grades have the second highest rate per 1,000 at 7.9. The pay grades E1-E3 have the highest rate per 1,000 at 17.
- In FY14, 65 percent of victims in incidents that met criteria were female. Of all adult spouse abuse victims in incidents that met criteria, 41 percent were between the ages of 18 and 24, and 46 percent were between the ages of 25 and 35.

Child Abuse

- The number of reports of suspected child abuse/neglect to the FAP increased 7.7 percent from FY13 and increased 1.1 percent from FY03. The rate of reported child abuse/neglect per 1,000 children increased 12.1 percent over FY13 rates and increased 10.6 percent above FY03 rates.
- The number of incidents of child abuse/neglect that met criteria increased by 9.8 percent from FY13, and increased 2.9 percent from FY03. The rate of incidents per 1,000 children that met criteria increased 14.1 percent over FY13 rates and increased 12.3 percent over FY03 rates.
- Of those incidents of child abuse and neglect that met criteria in FY14, 75 percent involved child neglect or child emotional abuse only. Child neglect accounts for 63 percent of all

incidents that met criteria. Incidents involving child neglect only increased by 14% from FY13.

- There were 30 child abuse-related fatalities reported to FAP in FY14, of which two child victims and five abusers were previously known to FAP. In the child fatality incidents, 21 of the alleged abusers were male and 20 were active duty. Eighteen of the child abuse related fatalities involved children under the age of one.
- Of the active duty alleged abusers in incidents that met criteria, 69 percent are in the E4 - E6 pay grades. These pay grades have the second highest rate per 1,000 at 9.1. The pay grades E1 - E3 have the highest rate per 1,000 at 20.
- In FY14, 53 percent of the alleged abusers in incidents that met criteria were male. 95 percent of the alleged abusers were parents. The ratio of male to female alleged abusers and the percentage of parent alleged abusers in incidents that met criteria have remained relatively constant since FY03.